

PLAZUELA ROBERT SCHUMAN

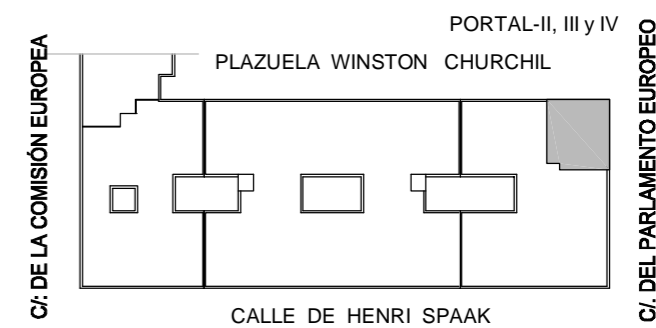
LOCAL-4
SUP. CONSTR. 75,30 m2

PORTAL-IV

ACCESO GARAJE

ELECT.

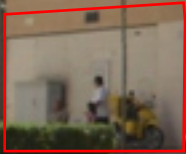
C/. DEL PARLAMENTO EUROPEO



92 VIV. SECTOR 65-B RmB-09

P.	LOCAL N.º	SUP. CONSTRUIDA
B.	4	75,30 m2







Plaza
Nikolaus Chavall

